

ORIGINAL ARTICLE

Balancing competing needs in kidney transplantation: does an allocation system prioritizing children affect the renal transplant function?

Marcus Weitz¹, Onur Sazpinar¹, Maria Schmidt¹, Thomas J. Neuhaus², Elisabeth Maurer³, Claudia Kuehni³, Paloma Parvex⁴, Hassib Chehade⁵, Sibylle Tschumi⁶, Franz Immer⁷ & Guido F. Laube¹

1 University Children's Hospital Zurich, Zurich, Switzerland

2 Children's Hospital, Lucerne, Switzerland

3 Institute for Social and Preventive Medicine, Berne, Switzerland

4 University Children's Hospital, Geneva, Switzerland

5 University Children's Hospital, Lausanne, Switzerland

6 University Children's Hospital, Berne, Switzerland

7 Swisstransplant, Berne, Switzerland

Correspondence

Marcus Weitz, Nephrology Unit, University Children's Hospital Zurich, Steinwiesstrasse 75, 8032 Zurich, Switzerland.

Tel.: +41 (0)44 266 32 63;

fax: +41 (0)44 266 78 61;

e-mail: marcus.weitz@kispi.uzh.ch

Marcus Weitz and Onur Sazpinar contributed equally to this work.

SUMMARY

Children often merit priority in access to deceased donor kidneys by organ-sharing organizations. We report the impact of the new Swiss Organ Allocation System (SOAS) introduced in 2007, offering all kidney allografts from deceased donors <60 years preferentially to children. The retrospective cohort study included all paediatric transplant patients (<20 years of age) before ($n = 19$) and after ($n = 32$) the new SOAS (from 2001 to 2014). Estimated glomerular filtration rate (eGFR), urine protein-to-creatinine ratio (UPC), need for antihypertensive medication, waiting times to kidney transplantation (KTX), number of pre-emptive transplantations and rejections, and the proportion of living donor transplants were considered as outcome parameters. Patients after the new SOAS had significantly better eGFRs 2 years after KTX (Mean Difference, MD = 25.7 ml/min/1.73 m², $P = 0.025$), lower UPC ratios (Median Difference, MeD = -14.5 g/mol, $P = 0.004$), decreased waiting times to KTX (MeD = -97 days, $P = 0.021$) and a higher proportion of pre-emptive transplantations (Odds Ratio = 9.4, 95% CI = 1.1–80.3, $P = 0.018$), while the need for antihypertensive medication, number of rejections and living donor transplantations remained stable. The new SOAS is associated with improved short-term clinical outcomes and more rapid access to KTX. Despite lacking long-term research, the study results should encourage other policy makers to adopt the SOAS approach.

Transplant International 2017; 30: 68–75

Key words

children, kidney allocation, kidney transplant function, policy analysis

Received: 14 June 2016; Revision requested: 28 July 2016; Accepted: 7 October 2016; EV Pub Online 2 November 2016

Introduction

Kidney transplantation (KTX) is considered as the best treatment option for children and adults with end-stage renal disease [1]. The steadily increasing number of renal transplant candidates challenges the relatively

unchanged kidney donor pool [2–4]. Children with end-stage renal disease represent a numerical minority and can suffer from long-term effects on growth, and physical and cognitive development [5–8]. To address these issues, most organ-sharing organizations have developed specific allocation strategies for children

[9–11]. Prior to the new Swiss Organ Allocation System (SOAS), kidney allograft allocation was based only on the factor time spent on the waiting list. The new SOAS was established to offer all renal allografts from deceased donors <60 years preferentially to ABO-compatible children and young adults (<20 years) aiming to reduce waiting time on the list for paediatric patients. Only patients in need of urgent KTX due to imminent lack of access to any mode of dialysis are preferred over children and young adults. Furthermore, the new SOAS provides the opportunity to place children on the waiting list without prior dialysis if the estimated glomerular filtration rate (eGFR) is <15 ml/min per 1.73 m².

We carried out a retrospective multicentre cohort study in all patients undergoing deceased donor KTX from 2001 to 2014 at Swiss paediatric nephrology transplant centres. The study objective was the assessment of the short-term clinical outcome of kidney transplants in children determined by eGFR, urine protein-to-creatinine (UPC) ratio, need for hypertensive medication, time spent on the transplant list, number of pre-emptive transplantations and rejections, and the proportion of living donor transplants.

Methods

A retrospective multicentre cohort study was conducted by reviewing data from the Swiss Paediatric Renal Registry (SPRR) [12]. The registry contains demographic and clinical data for each patient dialysed and/or transplanted during childhood and adolescence in Switzerland since the introduction of renal replacement therapy (RRT) in 1970. This study includes the SPRR data for all patients undergoing primary deceased donor KTX from 2001 to 2014 at paediatric nephrology transplant centres. Informed consent was obtained from the parents and/or from adolescent patients.

The inclusion criterion for patients was defined as follows: <20 years of age at time of deceased donor KTX. The study cohort was separated into two groups: patients transplanted from January 2001 to June 2007 were compared with those after the implementation of the new SOAS (July 2007–June 2014). Patients placed on the transplant list before the new SOAS but transplanted afterwards were excluded due to the possible bias on patient characteristics such as waiting time. All patients received only transplants from ABO-compatible and heart-beating donors.

Demographic and clinical characteristics were collected for both groups, such as sex, age, ethnic group, blood group, primary diagnosis, duration and modality

of dialysis (haemodialysis or peritoneal dialysis), and time on dialysis. The primary diagnosis was classified according to one of the three specified categories: congenital anomalies of the kidney and urinary tract, hereditary or acquired renal disorder [12]. Also, donor-related demographic and clinical characteristics were obtained such as age, body mass index, duration of cardiopulmonary reanimation, catecholamine administration, hypertension history, diabetes mellitus, cause of death and data on last available creatinine, C-reactive protein and UPC ratio in the first morning spot urine.

Quality characteristics of the transplant included data on ethnicity match, number of HLA mismatches, cold ischaemia time (CIT), peak panel-reactive antibodies (PRA) and immunosuppressive treatment regimen. This maintenance regimen consisted of calcineurin inhibitor (CNI; cyclosporine A or tacrolimus) combined with either mycophenolate mofetil (MMF) or azathioprine with or without induction therapy but corticosteroid administration for at least 12 months.

The following clinical and laboratory data were collected for each patient on the first outpatient clinic appointment and one and 2 years after KTX: plasma creatinine (μmol/l), body weight (kg) and height (cm), antihypertensive medication (aiming for a 24-h blood pressure target <95th percentile or <50th percentile if proteinuria is present) and measurement of UPC ratio in the first morning spot urine at last follow-up. Estimated GFR was calculated using the Schwartz formula method [13]. Diagnosis of rejection was made by a kidney biopsy either routinely performed (6 months after KTX) or following clinical indication based on the available Banff classification or previously used classification systems [14,15].

The primary outcome measure was the eGFR (ml/min per 1.73 m² body surface) one and 2 years after KTX. Amount of proteinuria, number of patients with hypertension medication, time on waiting list (days), number of pre-emptive transplantations and rejections, and the proportion of living donor transplants were considered as secondary outcome measures.

Demographic, disease-related and transplant-related variables were described using frequencies and percentages for categorical variables and mean ± standard deviation (normally distributed) or median and range (not normally distributed) for continuous variables. Group differences were assessed with Pearson's chi-squared test for categorical variables and with independent sample *t*-test or Mann–Whitney test for continuous variables. The effect of the new SOAS on eGFR was analysed in a linear mixed effects model with

random intercepts per subject and the following baseline adjustment variables: follow-up time point, age at KTX, donor age, immunosuppressive treatment therapy, pretransplant dialysis time, waiting time in the transplant list, UPC ratio at last follow-up, number of HLA mismatches and rejection. Comparison of the model with and without the effect in question was carried out by likelihood ratio tests, thereby obtaining a *P*-value for the effect. All data analyses were conducted using R 3.1.2 with the additional packages LME4 1.1-10 and RMS 4.5-0 [16–18].

Results

In total, 51 patients fulfilled the inclusion criteria, with 19 receiving KTX before and 32 after the new SOAS. Basic demographic and clinical characteristics were similar for patients undergoing deceased donor KTX before and after the new SOAS, as shown in Table 1. Significant differences between groups were only found in the pretransplant dialysis time, which was significantly decreased after the new SOAS, from a median 555 days to 148 days (median difference MeD = −407 days, *P* = 0.006). Corresponding donor characteristics were comparable for both groups (Table 2) and revealed no significant differences except for an increase in donor age (mean difference MD = 9.3 years, *P* = 0.040). The only difference regarding transplant characteristics was the type of combination immunosuppression therapy, with a significant shift towards CIN/MMF (odds ratio OR = 14.3, 95% CI = 1.7–121.8, *P* = 0.013). We excluded nine patients (four before and five after the new SOAS) for the following reasons: graft loss as a consequence of hyperacute rejection and vascular thrombosis (*n* = 2), loss of follow-up (*n* = 3), recurrence of primary underlying disease (*n* = 1) and death due to sepsis (*n* = 3) <1 year after KTX. Two additional patients were excluded due to listing before, but transplantation after the new SOAS. Excluded patients did not show differences in recipient characteristics compared with those included for analysis regarding sex (*P* = 0.212), mode of dialysis (*P* = 0.055), blood group (*P* = 0.559), age at KTX (*P* = 0.378), ethnicity (*P* = 0.105) and aetiology of renal disease (*P* = 0.217). They were not included in the analysis due to missing data for the primary outcome and the majority of secondary outcomes.

Detailed results for the comparison of primary and secondary outcome measures between patients before and after the new SOAS are presented in Table 3. Estimated GFR showed significant differences at 1 year (MD = 24.1 ml/min per 1.73 m³, *P* = 0.013) and

2 years (MD = 25.7 ml/min per 1.73 m³, *P* = 0.025) after KTX, with increased mean values after the policy change. Also, patients after the new SOAS had lower UPC ratio levels (MeD = −14.5 g/mol, *P* = 0.004), a shorter median time spent on the KTX waiting list (MeD = −97 days, *P* = 0.021, see Fig. 1) and a higher proportion of pre-emptive transplantations (5% vs. 34%, OR = 9.4, 95% CI = 1.1–80.3, *P* = 0.018). More than half of the patients needed antihypertensive medication after KTX, but this did not differ between groups. The number of rejections was not significantly different between both groups. Patients with routinely performed kidney biopsy 6 months after KTX did not necessarily have clinical signs of rejection or underwent therapy for rejection.

The comparison of living donor proportions among all transplantations carried out in the study period revealed a nonsignificant trend towards a lower number of living donor transplants after the new SOAS (OR = 0.5, 95% CI = 0.2–1.0, *P* = 0.052). Linear mixed effect modelling was applied to detect the influence of the new SOAS on eGFR, given a set of baseline covariates. We found a significant effect of the new law ($\chi^2(1) = 15.129$, *P* = 0.0001), increasing the eGFR by 45.4 ml/min per 1.73 m² (95% CI = 24.5–66.3 ml/min per 1.73 m²).

Discussion

Current allocation policies often link the priority of paediatric patients to additional requirements (see Table 4) [10,11,19–23]. The new SOAS limits these requirements only to a blood group-compatible donor aged <60 years, resulting in an increased donor pool. Even if available organs are rejected, this permissive policy results in further offers within a short period of time, as physicians are free to decline transplants without further consequences. Moreover, the paediatric age limit for recipients after the new SOAS is <20 years, independently of previous KTXs and therefore lies in the upper range compared to the majority of other countries, in which children are defined as being <18 years old [21].

Estimated GFR is considered as the best indicator for renal function in children and adolescents [24]. Our data revealed significantly better eGFRs in children after the new SOAS for the 1-year and 2-year outcome. With similar demographic and clinical characteristics for patients before and after the new SOAS, linear mixed model analysis showed that the new SOAS has a significant effect on renal function, even when baseline variables, which are possibly associated with graft failure or

Table 1. Recipient characteristics.

	Before SOAS (n = 19)	After SOAS (n = 32)	P-value
Demographics			
Sex (female)	10 (53)	11 (34)	0.235
Age at KTX – years	11.1 ± 4.7	10.7 ± 5.1	0.907
Ethnicity			0.829
Caucasian	16 (84)	29 (91)	
Middle East	1 (5)	1 (3)	
Hispanic	2 (11)	1 (3)	
Asian	0 (0)	1 (3)	
Clinical characteristics			
Blood group			0.467
O	12 (63)	20 (65)	
A	7 (37)	10 (29)	
B	0	2 (6)	
AB	0	0	
Aetiology of renal disease			0.384
CAKUT	6 (32)	5 (16)	
Hereditary	8 (42)	12 (37)	
Acquired	5 (26)	15 (47)	
Mode of dialysis			0.060
HD	11 (58)	13 (41)	
PD	7 (37)	8 (25)	
Pretransplant dialysis – days	555 (0; 1715)	148 (0; 3859)	0.006

CAKUT, congenital anomalies of the kidney and urinary tract; HD, haemodialysis; PD, peritoneal dialysis; SOAS, Swiss Organ Allocation System; SD, standard deviation; KTX, kidney transplantation.

Values are given as mean ± SD, median (min; max), or as absolute counts (percentage). Significant values are given in bold.

decreased graft function, were adjusted for, such as HLA mismatch, rejections and immunosuppressive treatment medication. Interestingly, only donor age was significantly different between both groups, with older kidney donors after the new SOAS, contrary to the widespread recommendation to prefer size-matched kidneys from younger patients [19,25–27].

We found a significant decrease in time on dialysis for patients after the new SOAS, which seems to be mainly driven by the marked increase in pre-emptive KTX from 5% to 34%. This increase can be traced back to the new SOAS, allowing unrestricted listing of patients with eGFRs <15 ml/min per 1.73 m². The effectiveness of a priority policy for children should be mainly evaluated by changes in waiting time. This time span is highly variable for children throughout European countries, ranging from approximately 4 to 36 months, with a median of 11 months spent on the transplant list in 2008 [21]. Our data showed that the median time on the waiting list for children in Switzerland dropped from approximately 6 months to less than 3 months after the SOAS introduction. The new SOAS has decreased the time on dialysis to a point where about 97% of all children receive an organ within

4 years of RRT, as compared to only 76.9% in European countries in 2008 [28].

Improved graft outcomes can be achieved with pre-emptive KTX and it is therefore recommended, particularly in paediatric patients [29,30]. The median prevalence of pre-emptive KTX among 29 European countries, however, was only around 17% in 2008, which is comparable to the United States [21,28,31–33]. The increased rate after the new SOAS should result in overall improved long-term graft survival [34–36].

There has been an ongoing debate concerning the impact of HLA matching on the outcome of a renal transplant [37–42]. We have to acknowledge that we were not able to detect an effect on HLA-matching strategy after the policy change. The number of mismatches seen in our study is congruent with a current trend, which shows that about 90% of all deceased donor kidney-only transplantations have HLA mismatches to some extent [39,43,44]. However, HLA mismatch leads to a higher risk for a sensitized state in the presence of re-transplantation, which is associated with longer waiting times [41,45,46]. An optimized approach with less histocompatibility mismatches should consequentially be preferred in future organ selection processes.

Table 2. Donor and transplant characteristics.

	Before SOAS (n = 19)	After SOAS (n = 32)	P-value
Donor			
Age – years	23.0 ± 15.0	32.3 ± 15.4	0.040
Body mass index – kg/m ²	24.7 (15.3; 27.8)	24.2 (12.6; 40.1)	0.961
Cardiopulmonary reanimation duration – min	0 (0; 60)	0 (0; 50)	0.980
Support with catecholamines	13 (68)	22 (69)	0.980
History of hypertension	2 (11)	0 (0)	0.061
At KTX			
Creatinine – µmol/l	76 (26; 148)	67 (38; 276)	0.316
Protein/creatinine >20 g/mol	5 (26)	7 (22)	0.560
C-reactive protein – mg/l	85.5 (5; 238)	99 (4; 534)	0.444
Diabetes mellitus	0 (0)	0 (0)	–
Death – cerebrovascular accident	13 (68)	18 (56)	0.389
Transplant			
Ethnicity match*	16 (84)	29 (91)	0.492
HLA mismatches	5 (2;6)	5 (3;6)	0.970
Cold ischaemia time – min	495 (261; 1050)	476 (294; 971)	0.802
Peak panel-reactive antibodies >4%	1 (5)	2 (6)	0.842
Immunosuppressive treatment			
Induction therapy	7 (37)	14 (44)	0.716
Maintenance therapy			0.013
CIN/AZA	3 (16)	0 (0)	
CIN/MMF	13 (68)	31 (97)	

AZA, azathioprine; CNI, calcineurin inhibitor; MMF, mycophenolate mofetil; SOAS, Swiss Organ Allocation System; SD, standard deviation; KTX, kidney transplantation.

Values are given as mean ± SD, median (min; max), or as absolute counts (percentage). Significant values are given in bold.

*All donors were of Caucasian ethnicity.

Table 3. Outcome measures.

	Before SOAS (n = 19)	After SOAS (n = 32)	P-value
Primary outcomes			
Renal function – ml/min per 1.73 m ²			
eGFR 1 year after KTX	67.8 ± 28.3	91.9 ± 33.2	0.013
eGFR 2 years after KTX	65.3 ± 33.2	91.0 ± 38.0	0.025
Secondary outcomes			
Protein/creatinine – g/mol	14.5 (0; 477)	0 (0; 94)	0.004
Hypertension medication	12 (63)	21 (66)	0.675
Waiting time on list – days	173 (9; 1433)	76 (6; 591)	0.021
Pre-emptive KTX	1 (5)	11 (34)	0.018
Rejection*	6 (32)	9 (28)	0.804
Living donor transplants – living/total (%)	36/55 (65)	29/61 (48)	0.052

KTX, kidney transplantation; SOAS, Swiss Organ Allocation System; eGFR, estimated glomerular filtration rate; SD, standard deviation.

Values are given as mean ± SD, median (min; max), or as absolute counts (percentage). Significant values are given in bold.

*Based on kidney biopsy either performed routinely or following clinical indication.

While the proportion of our patients treated for high blood pressure (BP) with at least one antihypertensive drug was unchanged in both groups, the UPC ratio was significantly decreased. Systolic hypertensive blood

pressure (BP) as well as proteinuria are strong and independent predictive factors for graft survival in paediatric patients [47–50]. CIT represents an independent risk factor for delayed graft function [51,52]. As the

Figure 1 Kaplan–Meier plot of waiting time on the transplant list for children receiving a deceased donor allograft before and after the new Swiss Organ Allocation System (SOAS). The log-rank comparison test showed a significantly decreased rate for children after the new SOAS ($P = 0.007$).

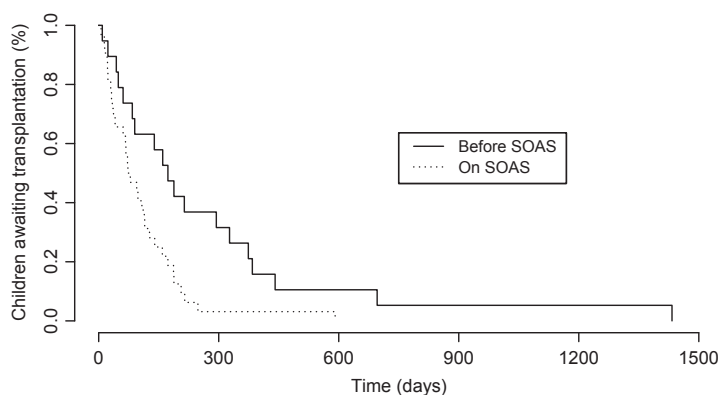


Table 4. Major characteristics of the Swiss Organ Allocation System (SOAS) in comparison with Eurotransplant and the Organ Procurement Transplantation Network (OPTN), USA, for the allocation of deceased kidneys.

	SOAS	Eurotransplant	OPTN
Paediatric status	<20 years	<16 years	<ul style="list-style-type: none"> • <18 years
Extended paediatric status	–	<ul style="list-style-type: none"> • Start of dialysis <16 years • Registration on waiting list <16 years (if dialysis started <17 years) • Proof to be in maturation 	<ul style="list-style-type: none"> • Listing regardless of clinical criteria • Start of dialysis <18 years
Paediatric bonus system	Not applicable	<ul style="list-style-type: none"> • Extra 100 points • Points for HLA mismatch doubled 	<ul style="list-style-type: none"> • Age at match
Pre-emptive KTX	Yes (eGFR <15)	<ul style="list-style-type: none"> • Yes, for high urgent cases only • No points for waiting time are accrued 	<ul style="list-style-type: none"> • Possible
Allocation algorithm criteria*	Child ↓ Adult	AM† ↓ HLA match ↓ Status paediatric ↓ Adult	<ul style="list-style-type: none"> • Combination of EPTS‡ and KDPI scoring§

KTX, kidney transplantation; eGFR, estimated glomerular filtration rate in ml/min per 1.73 m²; HLA, human leucocyte antigen.

*Restricted to ABO-compatible recipients only.

†Acceptable mismatch programme (adult/paediatric) to privilege highly sensitized transplant recipients.

‡Estimated post-transplant survival (EPTS): combining various recipient factors to summarize the need of a functioning kidney transplant based on a calculated score.

§Kidney donor profile index (KDPI): combining various donor factors to summarize the risk of graft failure after kidney transplant based on a calculated score.

kidney organs are retrieved and transplanted within a relatively small geographical area, resulting CITs were shown to be similar for the kidneys allocated before and after the new SOAS (median CIT between 8.25 and 8.0 h) [53].

Prioritizing children in kidney allocation policies may raise concerns regarding medical and ethical issues leading to political discussions, because arguments in favour of adults may also be used [20]. This fact gains even more weight given the decreased living donor transplant rates in countries with a priority policy for children, as a direct

consequence of more readily available deceased donor organs [33,54,55]. Although the proportion of living donor grafts is still markedly higher in Switzerland compared to the median proportion (43%) among a total of 29 European countries, this trend is also visible in our data (65% vs. 48% living donor grafts) and will simultaneously aggravate the existing organ shortage [21,22]. Then again, as children only encompass about 1–3% of all waitlisted patients, a shift in the graft source from living to deceased donors will not have an extensive effect on waiting times on the list for adult patients [2,3].

Notwithstanding, an approach that involves encouraging living donations should still be pursued.

The main limitation of the current study is the retrospective design that clearly does not have the advantages of a prospective study, the small sample size limiting the evaluation of potential confounders for the observed eGFR improvement and the absence of long-term outcome data. Our findings, however, should be viewed as a preliminary assessment of the new SOAS, and long-term effects of this policy will be reported. Although the working procedures and guidelines within Switzerland tend to be very uniform due to the relatively small geographical area, we cannot exclude that there was a change in the work-up process over time. In addition, there may be a selection bias of patients due to advances in treatment strategies in paediatric KTX [56].

Conclusion

In conclusion, the findings of our study highlight the significant effects of the new SOAS, leading to an improved short-term clinical outcome of kidney transplants in children, increased number of pre-emptive

deceased donor transplantations and reduced waiting times on list. Although the current study strengthens the arguments for prioritizing children in renal transplantation, we still require further research to accumulate more evidence for these findings by assessing the effects of long-term graft survival.

Authorship

MW and OS: participated in design of the work, data analysis and writing of the article. MS: participated in data analysis and writing of the article. TJN, EM, CK, PP, HC, ST and FI: participated in acquisition of data and writing of the article. GFL: participated in design of the work and writing of the article.

Funding

There are no funders to report for this article.

Conflicts of interest

The authors have declared no conflicts of interest.

REFERENCES

- McDonald SP, Craig JC, Australian, New Zealand Paediatric Nephrology A. Long-term survival of children with end-stage renal disease. *N Engl J Med* 2004; **350**: 2654.
- Eurotransplant Int. Foundation, Leiden, Netherlands. Available from: https://www.eurotransplant.org/cms/index.php?page=annual_reports_2014 (last accessed on April 16, 2016).
- Swisstransplant – nationale Stiftung für Organspende und Transplantation. Available at: https://www.swisstransplant.org/fileadmin/user_upload/Infos_und_Material/Medienmitteilungen/Preliminary_statistics_2015_Homepage.pdf (last accessed on April 16, 2016).
- HRSA – Health Resources and Service Administration. Available at: http://srtr.transplant.hrsa.gov/annual_reports/2012/pdf/01_kidney_13.pdf (last accessed on April 16, 2016).
- Claris-Appiani A, Bianchi ML, Bini P, et al. Growth in young children with chronic renal failure. *Pediatr Nephrol* 1989; **3**: 301.
- Crittenden MR, Holliday MA, Piel CF, Potter DE. Intellectual development of children with renal insufficiency and end stage disease. *Int J Pediatr Nephrol* 1985; **6**: 275.
- Hodson EM, Shaw PF, Evans RA, et al. Growth retardation and renal osteodystrophy in children with chronic renal failure. *J Pediatr* 1983; **103**: 735.
- McGraw ME, Haka-Ikse K. Neurologic-developmental sequelae of chronic renal failure in infancy. *J Pediatr* 1985; **106**: 579.
- Sweet SC, Wong HH, Webber SA, et al. Pediatric transplantation in the United States, 1995–2004. *Am J Transplant* 2006; **6**: 1132.
- Johnson RJ, Fuggle SV, Mumford L, et al. A New UK 2006 National Kidney Allocation Scheme for deceased heart-beating donor kidneys. *Transplantation* 2010; **89**: 387.
- Eurotransplant Int. Foundation, Leiden, Netherlands. Available from: http://www.eurotransplant.org/cms/index.php?page=et_manual Chapter 7 (last accessed on 10 April 2016).
- Maurer E, Kuehni CE, Leumann EP, Neuhaus TJ, Laube GF, Swiss Workgroup for Pediatric Nephrology (SAPN). The Swiss Pediatric Renal Registry 1970–2010. *Paediatr* 2011; **22**: 27.
- Schwartz GJ, Muñoz A, Schneider MF, et al. New equations to estimate GFR in children with CKD. *J Am Soc Nephrol* 2009; **20**: 629.
- Solez K, Colvin RB, Racusen LC, et al. Banff 07 classification of renal allograft pathology: updates and future directions. *Am J Transplant* 2008; **8**: 753.
- Winchester JF, Gelfand MC, Foegh ML, Helfrich GB, Schreiner GE. Early indicators of renal allograft rejection. *Kidney Int Suppl* 1983; **14**: S-34.
- R Core Team. *R: A Language and Environment for Statistical Computing*. Vienna, Austria: R Foundation for Statistical Computing, 2014. <http://www.R-project.org/>.
- Harrell Jr FE. rms: Regression Modeling Strategies. R package version 4.5-0, 2016. Available from: <http://CRAN.R-project.org/package=rms>.
- Bates D, Machler M, Bolker BM, Walker SC. Fitting linear mixed-effects models using lme4. *J Stat Softw* 2015; **67**: 1.
- Agarwal S, Oak N, Siddique J, Harland RC, Abbo ED. Changes in pediatric renal transplantation after implementation of the revised deceased donor kidney allocation policy. *Am J Transplant* 2009; **9**: 1237.
- Capitaine L, Van Assche K, Pennings G, Sterckx S. Pediatric priority in kidney

- allocation: challenging its acceptability. *Transpl Int* 2014; **27**: 533.
21. Harambat J, van Stralen KJ, Schaefer F, et al. Disparities in policies, practices and rates of pediatric kidney transplantation in Europe. *Am J Transplant* 2013; **13**: 2066.
 22. Eurotransplant Int. Foundation, Leiden, Netherlands. Available from: http://www.eurotransplant.org/cms/index.php?page=et_manual Chapter 1 (last accessed on 14 April 2016).
 23. Organ Procurement and Transplantation Network (OPTN). Available from: https://optn.transplant.hrsa.gov/media/1200/optn_policies.pdf#nameddest=Policy_08 (last accessed on 29 July, 2016).
 24. Schwartz GJ, Work DF. Measurement and estimation of GFR in children and adolescents. *Clin J Am Soc Nephrol* 2009; **4**: 1832.
 25. Matas AJ, Gillingham KJ, Humar A, Dunn DL, Sutherland DE, Najarian JS. Immunologic and nonimmunologic factors: different risks for cadaver and living donor transplantation. *Transplantation* 2000; **69**: 54.
 26. Woo YM, Gill JS, Johnson N, Pereira BJ, Hariharan S. The advanced age deceased kidney donor: current outcomes and future opportunities. *Kidney Int* 2005; **67**: 2407.
 27. Codas R, Danjou F, Dagot C, et al. Influence of allograft weight to recipient bodyweight ratio on outcome of cadaveric renal transplantation. *Nephrology* 2014; **19**: 420.
 28. Chesnaye N, Bonthuis M, Schaefer F, et al. Demographics of paediatric renal replacement therapy in Europe: a report of the ESPN/ERA-EDTA registry. *Pediatr Nephrol* 2014; **29**: 2403.
 29. Meier-Kriesche HU, Kaplan B. Waiting time on dialysis as the strongest modifiable risk factor for renal transplant outcomes: a paired donor kidney analysis. *Transplantation* 2002; **74**: 1377.
 30. Crafter SR, Bell L, Foster BJ. Balancing organ quality, HLA-matching, and waiting times: impact of a pediatric priority allocation policy for deceased donor kidneys in Quebec. *Transplantation* 2007; **83**: 1411.
 31. Transplantation EGoR. European best practice guidelines for renal transplantation. Section IV: long-term management of the transplant recipient. IV.11 Paediatrics (specific problems). *Nephrol Dial Transplant* 2002; **17**: 55.
 32. ERA-EDTA Registry Annual Report. 2009 Academic Medical Center, Department of Medical Informatics, Amsterdam, The Netherlands, 2011.
 33. U.S. Renal Data System, USRDS. Annual Data Report: Atlas of Chronic Kidney Disease and End-Stage Renal Disease in The United States, National Institutes of Health, National Institutes of Diabetes and Digestive and Kidney Diseases, Bethesda, MD, 2010.
 34. Cransberg K, Smits JM, Offner G, Nauta J, Persijn GG. Kidney transplantation without prior dialysis in children: the Eurotransplant experience. *Am J Transplant* 2006; **6**: 1858.
 35. Vats AN, Donaldson L, Fine RN, Chavers BM. Pretransplant dialysis status and outcome of renal transplantation in North American children: a NAPRTCS Study. North American Pediatric Renal Transplant Cooperative Study. *Transplantation* 2000; **69**: 1414.
 36. Sinha R, Marks SD. Comparison of parameters of chronic kidney disease following paediatric preemptive versus non-preemptive renal transplantation. *Pediatr Transplant* 2010; **14**: 583.
 37. Gjertson DW, Cecka JM. Determinants of long-term survival of pediatric kidney grafts reported to the United Network for Organ Sharing kidney transplant registry. *Pediatr Transplant* 2001; **5**: 5.
 38. Morris PJ, Johnson RJ, Fuggle SV, Belger MA, Briggs JD. Analysis of factors that affect outcome of primary cadaveric renal transplantation in the UK. HLA Task Force of the Kidney Advisory Group of the United Kingdom Transplant Support Service Authority (UKTSSA). *Lancet* 1999; **354**: 1147.
 39. Su X, Zenios SA, Chakkeri H, Milford EL, Chertow GM. Diminishing significance of HLA matching in kidney transplantation. *Am J Transplant* 2004; **4**: 1501.
 40. Gritsch HA, Veale JL, Leichtman AB, et al. Should pediatric patients wait for HLA-DR-matched renal transplants? *Am J Transplant* 2008; **8**: 2056.
 41. Opelz G, Wujciak T, Dohler B, Scherer S, Mytilineos J. HLA compatibility and organ transplant survival. Collaborative Transplant Study. *Rev Immunogenet* 1999; **1**: 334.
 42. Takemoto SK, Terasaki PI, Gjertson DW, Cecka JM. Twelve years' experience with national sharing of HLA-matched cadaveric kidneys for transplantation. *N Engl J Med* 2000; **343**: 1078.
 43. Eurotransplant Int. Foundation, Leiden, Netherlands. Available at: <http://statistics.eurotransplant.org/reportloader.php?report=55959-6086-5854&format=html&download=0> (last accessed April 16, 2016).
 44. Opelz G. The benefit of exchanging donor kidneys among transplant centers. *N Engl J Med* 1988; **318**: 1289.
 45. Chaudhuri A, Gallo A, Grimm P. Pediatric deceased donor renal transplantation: an approach to decision making II. Acceptability of a deceased donor kidney for a child, a snap decision at 3 AM. *Pediatr Transplant* 2015; **19**: 785.
 46. Otten HG, Calis JJ, Kesmir C, van Zuilen AD, Spierings E. Predicted indirectly recognizable HLA epitopes presented by HLA-DR correlate with the de novo development of donor-specific HLA IgG antibodies after kidney transplantation. *Hum Immunol* 2013; **74**: 290.
 47. Sorof JM, Poffenbarger T, Portman R. Abnormal 24-hour blood pressure patterns in children after renal transplantation. *Am J Kidney Dis* 2000; **35**: 681.
 48. Collaborative Transplant Study, 2012. Available at: <http://www.ctstransplant.org/> (accessed November 23, 2014).
 49. The North American Pediatric Renal Trials and Collaborative Studies, 2010. Available at: <http://webemmes.com/study/ped/> (accessed November 23, 2014).
 50. Knoll GA. Proteinuria in kidney transplant recipients: prevalence, prognosis, and evidence-based management. *Am J Kidney Dis* 2009; **54**: 1131.
 51. Ponticelli CE. The impact of cold ischemia time on renal transplant outcome. *Kidney Int* 2015; **87**: 272.
 52. Sert I, Colak H, Tugmen C, Dogan SM, Karaca C. The effect of cold ischemia time on delayed graft function and acute rejection in kidney transplantation. *Saudi J Kidney Dis Transpl* 2014; **25**: 960.
 53. Uehlinger NB, Beyeler F, Weiss J, Marti HP, Immer FF. Organ transplantation in Switzerland: impact of the new transplant law on cold ischaemia time and organ transports. *Swiss Med Wkly* 2010; **140**: 222.
 54. Dale-Shall AW, Smith JM, McBride MA, Hingorani SR, McDonald RA. The relationship of donor source and age on short- and long-term allograft survival in pediatric renal transplantation. *Pediatr Transplant* 2009; **13**: 711.
 55. Magee JC, Krishnan SM, Benfield MR, Hsu DT, Shneider BL. Pediatric transplantation in the United States, 1997–2006. *Am J Transplant* 2008; **8**: 935.
 56. Tonshoff B, Hocker B. Treatment strategies in pediatric solid organ transplant recipients with calcineurin inhibitor-induced nephrotoxicity. *Pediatr Transplant* 2006; **10**: 721.